

Increasing Confidence in, Commitment to, and a Sense of Belongingness in a Health Career

Dolores Oscós-Flores BSEd

Suhail Shaikh MD

Manuel Angel Oscós-Sánchez MD

Family & Community Medicine

The University of Texas HSC at San Antonio

Research Funding: Texas Higher Education Coordinating Board

Session Overview

Our Story

- Program History
- Description of the Intervention
- Program Evaluation

Discussion

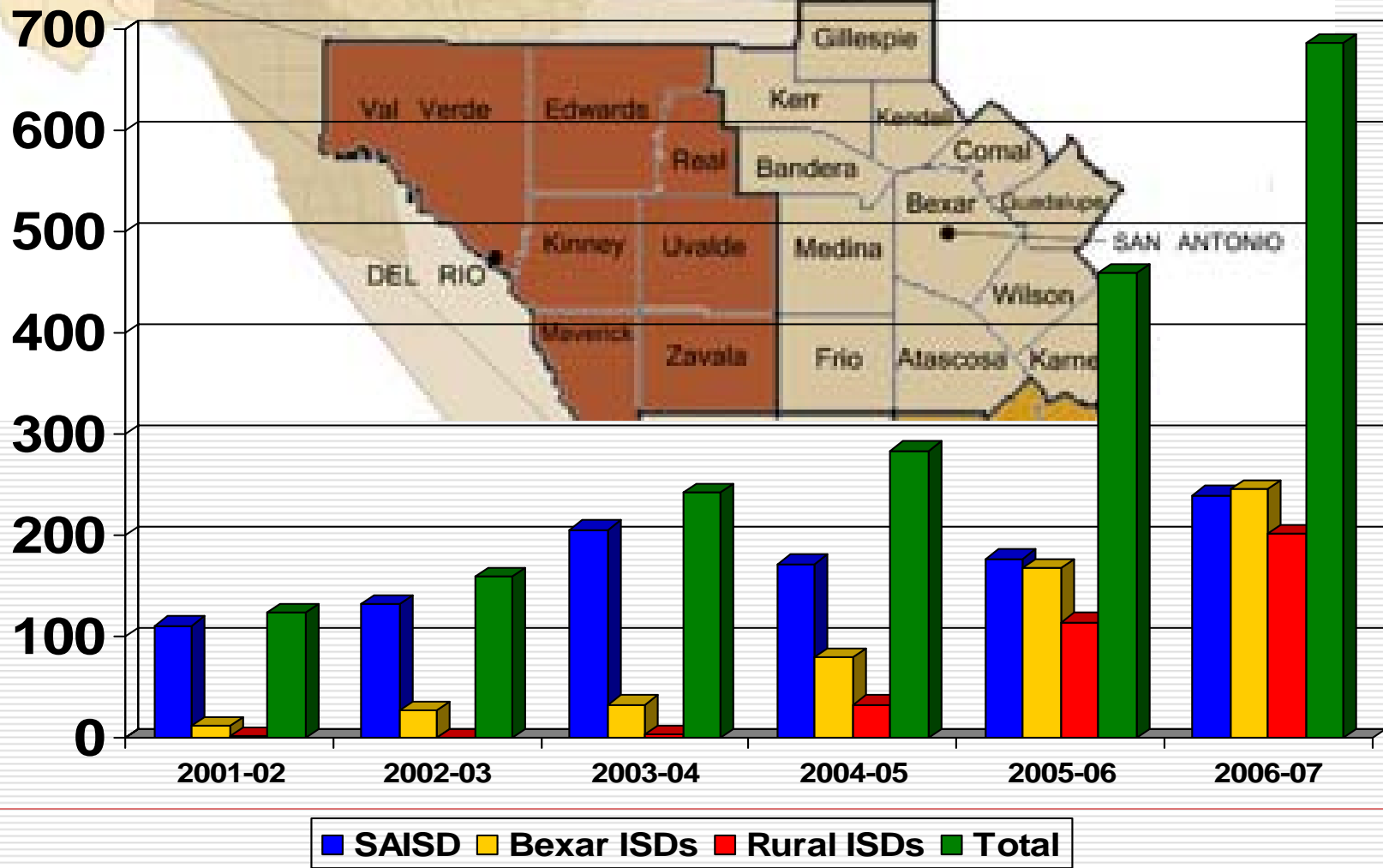
- Sharing Thoughts and Perspectives
-

Program History

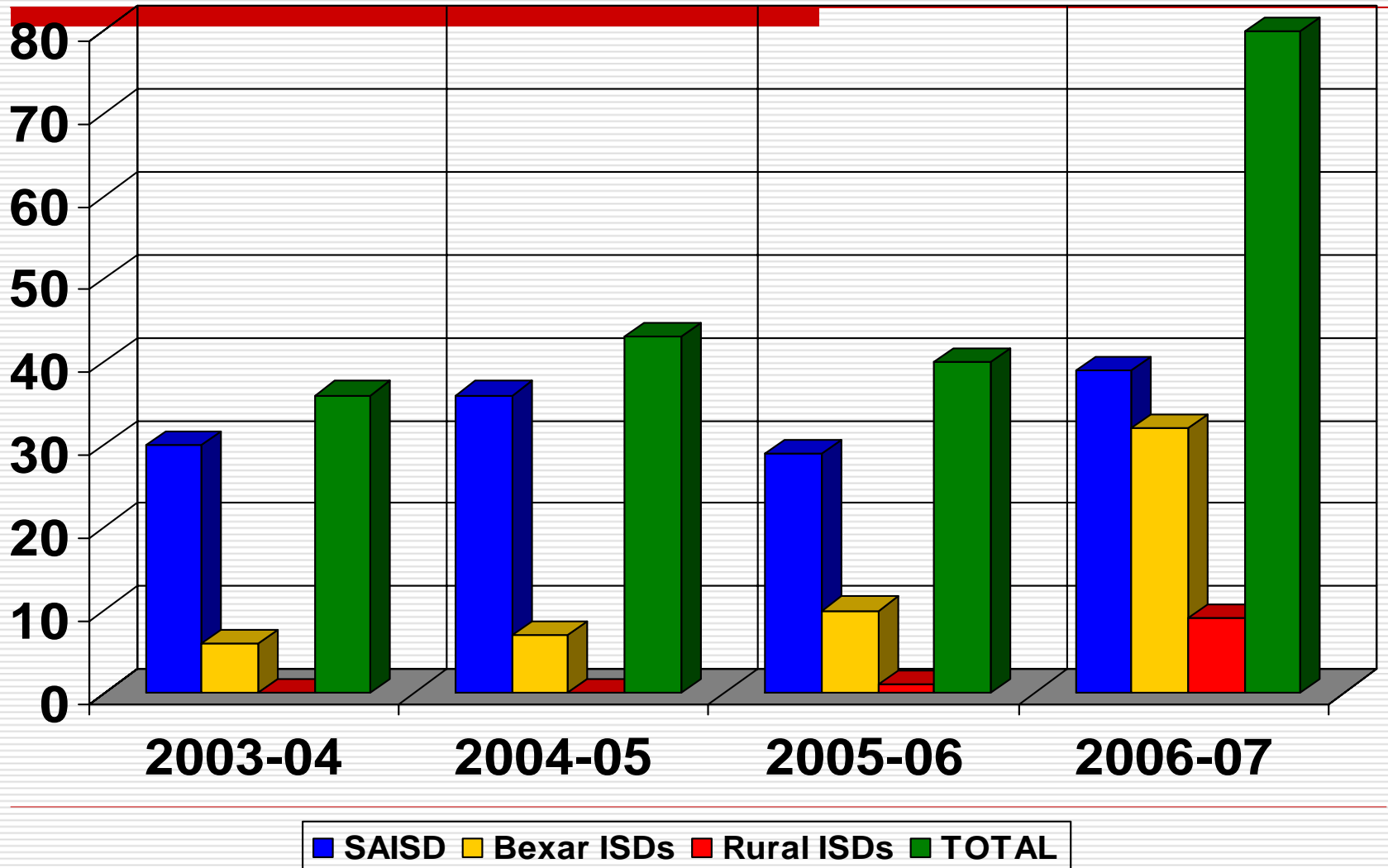
- 2001-02
 - Teen Health Interest Survey
 - Teen Health Camps
- 2002-03
 - Teen Health Camps
- 2003-06
 - Teen Medical Academy
- 2006-07
 - Teen Health Career Survey

Research Funding: Texas Higher Education Coordinating Board

Teen Health Camp Participants by Target School Districts



Teen Medical Academy Graduates by Target School District



Description of the Intervention

6 Medical Workshops

Surgery

Orthopedics

Gastroenterology

Cardiology

Pulmonology

Obstetrics

3 Teen Health Camps

Description of the Intervention

Instructors

Family Medicine Residents and Faculty

UTHSCSA Medical Students

Trinity University Pre-Medical Students

TMA Peer Facilitators

Structure

Monthly on Saturday Mornings

Rotate through 30 minute sessions

September Workshop

SURGERY

- Preparing a Sterile Field
- Applying Local Anesthesia
- Simple Interrupted Sutures
- Running Locked Sutures
- Common Skin Lesions

TMA

October Workshop

ORTHOPEDICS

- Putting on Short Arm Casts
- Putting on Short Leg Casts
- Ankle Anatomy
- Arm & Wrist Fractures
- Removing Casts

TMA

December Workshop

GASTROENTEROLOGY

- Abdominal Ultrasound
- Transducer Placement & Ultrasound Images
- Abdominal Anatomy Stations
- Abdominal Pathology Review

TMA

January Workshop

CARDIOLOGY

- Performing EKGs
- Listening to Heart Sounds
- Heart Rates & Blood Pressure
- Cardiac Ultrasound
- Cardiology Review

TMA

March Workshop

PULMONOLOGY

- ❑ Using Peak Flow to Screen & Manage Asthma
- ❑ Listening to Breath Sounds
- ❑ Asthma
- ❑ Chest X-Rays
- ❑ Thoracentesis (new for 2007)

TMA

April Workshop

OBSTETRICS

- How to Deliver a Baby
- OB Ultrasound Examination
- Electronic Fetal Monitoring
- Using Gestational Age Wheels
- The Stages of Labor

TMA

November, February, May

TEEN HEALTH CAMP

- Suture Workshop
- Casting Workshop
- Medical Career Loteria
- Life as a Teen Parent
- Building Muscle
- BMI and Nutritional Labels
- Stress Bingo
- HIV

TMA

Program Evaluation

□ Randomized Controlled Evaluation

- 361 Potential Participants
 - 222 Intervention Group- ~~TMA~~
 - 139 Control Group- no ~~TMA~~

□ Self-Administered Mail Questionnaire

- Confidence Scale (15 items)
 - Commitment Scale (3 items)
 - Belongingness Scale (4 items)
-

Results

	TMA N= 222	no TMA N= 139
Valid Address	198/222 (89%)	124/139 (89%)
Response Rate	157/198 (79%)	76/124 (61%)
Latino	135/157 (86%)	71/76 (93%)

Results

	TMA n= 157	no TMA n= 76	p-value
Confidence Mean Score	3.30	3.09	.019
Commitment Mean Score	3.46	3.25	.031
Belongingness Mean Score	3.34	3.02	.002

Results- Interest

	TMA n= 157	no TMA n= 76	p-value
Surgery	46%	31%	.042
Orthopedics	20%	9%	.033
Gastroenterology	14%	1%	.003
Cardiology	36%	23%	.064
Pulmonology	20%	9%	.034
Obstetrics	31%	21%	.179

Results- Interest

	TMA n= 157	no TMA n= 76	p-value
OR Tech	38%	14%	.000
Casting Tech	28%	16%	.049
Ultrasound Tech	42%	37%	.475
EKG Tech	22%	16%	.379
Respiratory Ther	22%	12%	.103
Birth Attendant	46%	41%	.570

Discussion

- ❑ What would you say is a key program element needed to increase confidence, commitment, or a sense of belongingness?
 - ❑ What would you say is the biggest obstacle you have had or are having in either developing, implementing, or evaluating a health career promotion program?
 - ❑ What change would you suggest to make either the TMA or your local program more effective?
-

Thanks !!!!!

Contact Information

oscosp@uthscsa.edu

oscospflores@uthscsa.edu

210-358-3881

TMA